



5. Postpartum Services Component

PROGRAM GOAL

To ensure that all IEHP Members receive appropriate and timely postpartum care.

PROGRAM OVERVIEW

Participating PCPs, OB/PCPs and OB Specialists are incentivized \$200 for one eligible postpartum assessment performed within three to eight weeks after delivery.

WHO CAN PARTICIPATE

Any IEHP Physician credentialed to treat women.

WHICH MEMBERS ARE ELIGIBLE

Any postpartum IEHP Member who is enrolled in one of these programs: Medi-Cal, Healthy Families, Healthy Kids or Medicare DualChoice. Plus, the Member must be:

- Three to eight weeks post-delivery
- Active on date of service (DOS) the postpartum visit is performed

INCENTIVE

- \$200 for postpartum assessment visit (if done within 3-8 weeks post delivery)
- Incentives are paid within 30 working days of receipt of a complete PNO form submitted online

HOW TO REPORT POSTPARTUM SERVICES

Complete a Pregnancy Notification/Outcome Report online at www.iehp.org and indicate appropriate CPT codes for postpartum visit.

(**Pap Test performed during postpartum visit can be reported online using the same PNO form)

Pregnancy Notification/Outcome Report Form must be submitted online to IEHP **within 1 month from the date of service** and meet IEHP's submission standards to qualify for incentive.

WHERE TO SUBMIT THE FORMS

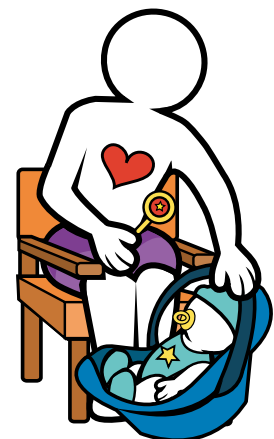
Submit online at www.iehp.org. Log into the Provider Secure Site and click on the P4P button. **Need help?** Refer to the online P4P Submission Training Manual or call the Provider Relations Team at (909) 890-2054.

FOR CORRECTIVE RESUBMISSIONS ONLY:

Submit corrections to IEHP **within 60 days** of the initial electronic submission date.

Mail your PNO corrections to:

IEHP – Healthcare Analytics Department (HAR)
P.O. Box 19026
San Bernardino, CA 92423-9026



Inland Empire Health Plan