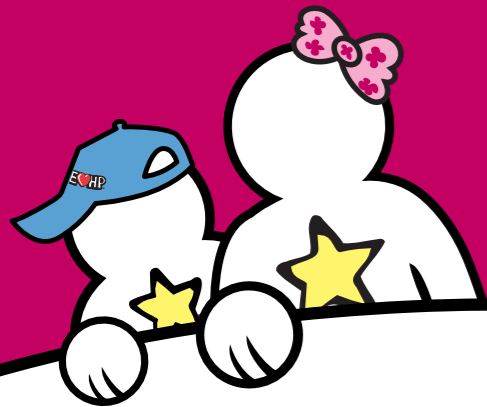


IEHP Foster Care Program



**Your easiest,
most direct access
to health care!**



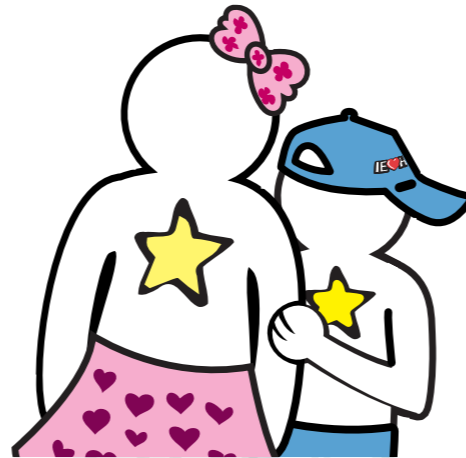
The Riverside County Department of Public Social Services and Inland Empire Health Plan (IEHP) have come together to offer you a better way to access your Medi-Cal benefits. Plus, as IEHP Members, you'll have additional benefits and programs ideal for foster families.

Here are just a few of the ways the IEHP Foster Care Program will make caring for your children easier –

The IEHP Open Access Network

- **You can see any Primary Care Doctor in the IEHP Open Access Network.** Just show your IEHP Card and you're in! No more wasted time looking for doctors who accept Medi-Cal.
- **You can switch Primary Care Doctors whenever you need to...instantly!** We suggest that you stay with a Doctor who is a good match with your family. **But if you have to make a change, just call IEHP Member Services at 1-800-440-IEHP (4347)/ TTY (909) 890-0731.** If there's no time for a call, don't worry...any IEHP Open Access Primary Care Doctor will treat your child.
- **Your child doesn't have a BIC? Misplaced your IEHP Card? Need to see a Doctor right away?** It's not a problem. Our Doctors can check eligibility at any time! If you lose your IEHP Card, call

IEHP Member Services for a new card. And of course, we'll automatically send one whenever a child moves.



**With IEHP,
Help is always
just a phone call away...**

Have questions? Need help? **Call IEHP Member Services at 1-800-440-IEHP (4347)/ TTY (909) 890-0731.**

Our Member Services Representatives will answer your questions and help you with everyday problems.

And if your children get sick when your Doctor's office is closed, we have nurses available for you every night, and on holidays and weekends. Just call the **IEHP After-Hours Nurse Advice Line at 1-888-244 IEHP (4347)** for the advice you need.

IEHP's Doctor-2-Doctor referral program takes the wait out of seeing a Specialist

When your child needs to see a Specialist, your Doctor can refer you directly to a Specialist for the first appointment. It's that simple! No waiting for approvals, no denials.

If you need medical help when your Doctor's office is closed...

IEHP has conveniently located Urgent Care facilities. You can get a full list from IEHP Member Services, or ask your After-Hours Nurse.

IEHP offers programs to help you keep your children healthy and safe.

Call IEHP Member Services to find out how to get Infant Car Seats, Bicycle Safety Helmets, and Vitamins – all at no cost!

Also ask about our Health Education classes, designed to give you the extra help you need for children with chronic illnesses like asthma or diabetes.

**For more information call
IEHP Member Services
1-800-440-IEHP (4347)
TTY (909) 890-0731**

